

Volume

1

DEDICATED MICROS, INC.



NetVu Health Monitor (HM)

Installation Guide

DEDICATED MICRO, INC

 NetVu Health Monitor

Installation Guide

© Dedicated Micros, Inc.
14434 Albemarle Point Place • Suite 100
Chantilly, VA 20151
Phone 703.904.7738 • Fax 703.904.7743
Document Version 1.0

Table of Contents

<i>System Requirements</i>	<u>3</u>
<i>Health Monitor Installation</i>	<u>3</u>
<i>Trouble Shooting the Health Monitor Installation</i>	<u>5</u>

Introduction

The purpose of this Guide is to walk through the installation process of the NetVu Health Monitor components as well as all required third party software.

NOTE: Always uninstall any existing versions of the NetVu Health Monitor prior to installing the new version. To uninstall, use Control Panel -> Add/Remove programs.

System Requirements

The Health Monitor minimum requirements are:

- Microsoft® Windows XP (Service Pack 2) or Microsoft® Windows 2000 (Service Pack 4)
- Pentium IV 1.8 GHz processor or better
- 256 MB RAM
- 10/100 Mb Ethernet half duplex network interface card
- Adobe® Reader® 6.0 is required to view the User Guide via the Help Button located on the main screen of the Tool
- Additional Health Monitor requirements are:
 - Health Monitor is compatible with
 - All DVRs must have Firmware

Health Monitor Installation

Install the NetVu Health Monitor Tool on your PC by running the setup.exe file. If you receive the following message during the installation process, click the Cancel button to bypass it and continue with the install:

“MDAC 2.8 RTM is incompatible with this version of Windows. All of its features are currently part of Windows.”

For further information see the Trouble Shooting Section at the end of this guide.

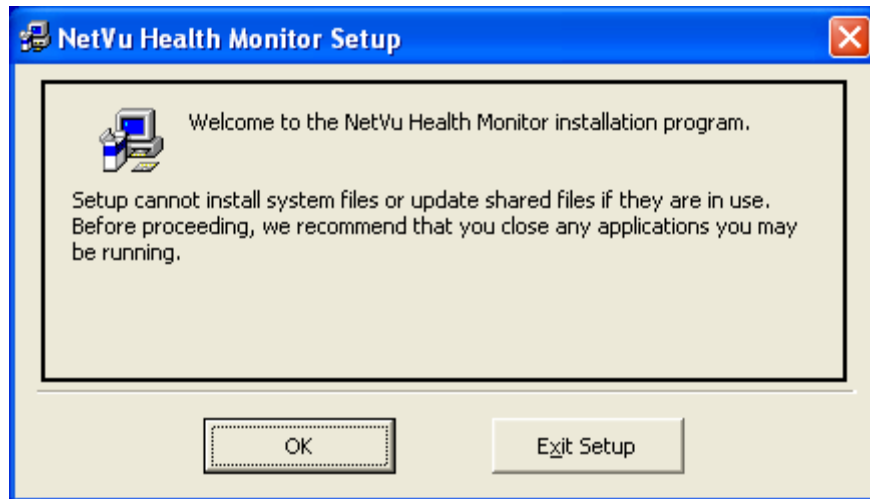


Figure 1 Press the OK Button

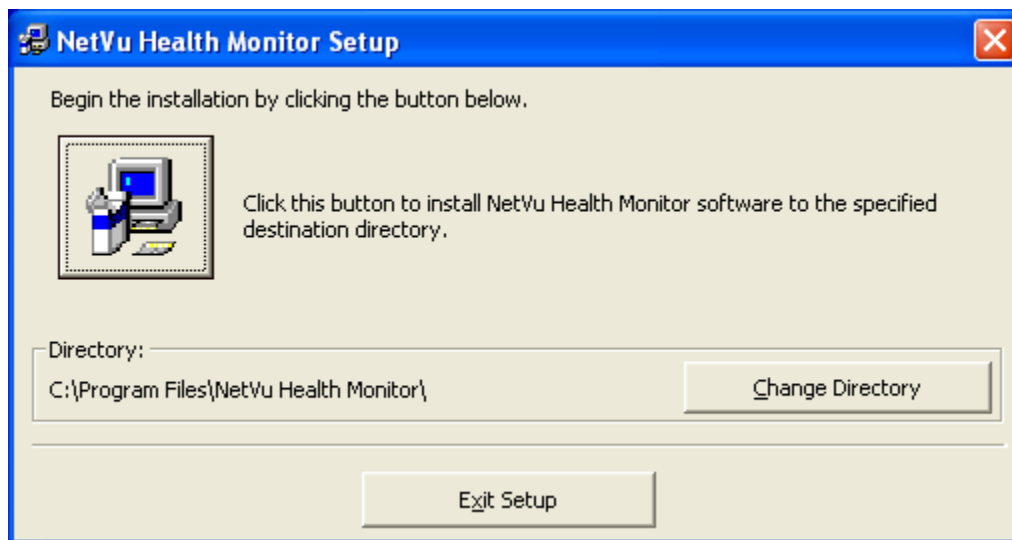


Figure 2 Press the Computer Icon



Figure 3 Press the OK Button

This concludes the installation of the NetVu Health Monitor Tool.

Trouble Shooting the Health Monitor Installation

Issue	Solution
MDAC 2.8 RTM is incompatible with this version of Windows. All of its features are currently part of Windows	Cancel to bypass this message and continue with the install



Health Monitor Installation Guide

Document Version 1.0